



COOLING SECTION GLOSSARY

<i>Radiators & Related Parts</i>	192-193
<i>Water Pumps & Related Parts</i>	194
<i>Fans & Related Parts</i>	194-195
<i>Thermostats & Related Parts</i>	195
<i>Heater Cores & Related Parts</i>	196-197
<i>Heater & Defroster Related Parts</i>	197-199
<i>Air Conditioning Related Parts</i>	200



From Bowling Green, Montana,
Don & Julia Black
enjoying a parade with their family
in their 1955 Studebaker truck



RADIATORS

New!



NEW Listing - 802036 New production 2-row copper exceeds specs of original 3 row. 1963-85 Avanti. **\$650.00 ea.**

NEW Listing - 802182 Replacement radiator, 1956 - 1966 V-8 car, all models except Avanti. Truck: 1960 - 1964 V-8 Champ. 2 - row copper with better cooling capacity than original 3-row. Includes fittings for models with transmission cooler lines. **\$650.00 ea.**

We have a limited supply of radiators in stock. Both new and reconditioned.

Please call (317) 462-3124 for price and availability!

BRASS FREEZE PLUGS



127366 1-3/16" disc. 1934-42 all models except Champion & 1947-50 Commander. Truck: M16, 17 & 2R-5E 3, 6, 11, 14, 16, 17. Takes 1. **\$2.75 ea.**

801353 1-1/2" Self locking type. Easily installed in difficult to get at places. **\$6.50 ea.**



1539038 1-1/2" disc. 1939-60 Champion. Takes 1. 1934-60 Commander 6-cyl. Takes 6. 1951-early 62 V-8. Takes 6. Truck: M5 10, 15 & 2R-6E 2, 7, 12, 13, 28, 38, 40. Also used on camshaft rear bearing hole. **\$3.00 ea.**

1550386 1-1/2" cup. Late 1962-64 car, 6-cyl. Takes 1. 1962-64 V-8 including Avanti. Takes 6. Truck: 6E 5, 10 & 7E-8E 5, 7, 10, 12, 13, 28, 40. **\$3.75 ea.**

1550433 1-7/8" cup. 1939-64 Champion 6-cylinder. Truck: M5, 10, 15 & 2R-2E 5, 10, 15 & 3E-6E 1, 5, 10. Takes 3. **\$4.50 ea.**

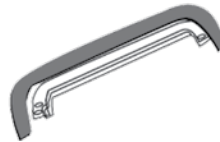
1553644 Steel. 11/16" 1961-64 6-cyl. Head Takes 6. Truck: 6E-8E 5,10. **\$1.00 ea.**

NEW Listing - 1563955 Steel. 1 5/7" 1965 - 66 6-cylinder & V-8. **\$1.00 ea.**

NEW Listing - 1563956 Steel. 2" 1965 - 66 6 -cylinder. **\$1.00 ea.**

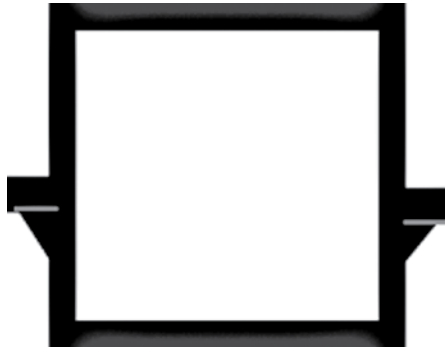
RADIATOR BAFFLE

1312475 Rubber seal, above radiator. 1956-64 C & K. Steel staples included. **\$18.50 ea.**



801930 Steel staples. **\$2.00 set/20**

RADIATOR SUPPORTS



Availability is extremely limited on some NOS units.

274527 1941-46 Champion **\$95.00 ea.**

284345 1947- early 48 Champion. **\$95.00 ea.**

289247 Late 1948 Champion. **\$95.00 ea.**

289640 1950 Champion. **\$95.00 ea.**

289580 1950 Commander. **\$95.00 ea.**

290486 1949 Champion. **\$95.00 ea.**

296263 1951-52 all cars. **\$95.00 ea.**

298385 1953-55 all sedan. **\$95.00 ea.**

303446 1953-55 C & K. **\$130.00 ea.**

1312069 1956-58 all except C & K. **\$95.00 ea.**

1312081 1956-58 Hawks except 1958 Packard. **\$160.00 ea.**

1327593 1958 Packard Hawk. **\$160.00 ea.**

1331374 1959-60 Lark all except convertibles. **\$95.00 ea.**

1336875 1960 convertible. **\$120.00 ea.**

1338330 1961-64 convertible, 1962-64 Lark & all 1963-66 sliding roof wagons except 65-66 6-cylinder. **\$120.00 ea.**

1338332 1961-64 Lark, all model except sliding roof station wagon & convertible & 1965-66 V-8 except sliding roof station wagon. **\$110.00 ea.**

1358717 1963-85 Avanti Pictured. **\$269.95 ea.**

1361025 1965-66 6-cylinder Lark station wagon with sliding roof. **\$95.00 ea.**

1361026 1965-66 6-cylinder Lark, all models except sliding roof station wagon. **\$95.00 ea.**

1654125 1956-64 C-cab Truck most models except the largest model for 1962 thru 1964. Call for exact application coverage. **\$140.00 ea.**

1655783 1962-64 Truck model 15 thru 45 with the exception of model 40. **\$140.00 ea.**

1693608 1963-64 Postal Zip Van. **\$95.00 ea.**

RADIATOR OVERFLOW KIT

800183

This radiator overflow kit was factory equipment for many years on Avanti II's, and is a good addition on all other Studebakers including Larks, Hawks & trucks. Includes bottle, cap, bracket, radiator cap, and flexible tube. **\$19.95 ea.**



801858 Extra Cap, radiator overflow bottle. **\$1.50 ea.**

AVANTI SURGE TANK ELIMINATOR KIT



TIRED OF LEAKS IN YOUR SURGE TANK? THIS KIT OFFERS AN EASY AND PERMANENT FIX THAT WAS STANDARD ON LATER MODEL AVANTI.

800480 Kit includes cast iron water outlet, hoses, clamps, filler, overflow tank, everything needed, 63-69. **\$145.00/kit**



COOLING SYSTEM CLEANER & NEUTRALIZER

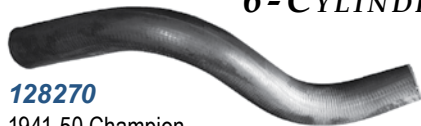
802084 Studebaker-Packard "Cooling System Cleaner & Neutralizer". This is a genuine item originally manufactured for Studebaker & sold at their dealerships. It is not a duplicate. Brightly colored can has cleaner on one end and neutralizer on the other. Contents are usable or makes a great display item. **\$12.50 ea.**



New!

MOLDED RADIATOR HOSES

UPPER 6-CYLINDER



- 128270** 1941-50 Champion.
Truck: M5, M15, M15A. **\$12.00 ea.**
191984 1939-40 Commander & 1939-40
President 8, Truck: 1939-40 Coupe Express.
..... **\$16.50 ea.**
530601 1951-52 Champion. **\$18.00 ea.**
532430 1953-55 Champion sedan.
..... **\$24.00 ea.**
532431 1953-55 Champion C & K.
..... **\$24.75 ea.**
673969 Truck: 2R-2E: 5, 10, 15 & 3E 1, 5, 10.
..... **\$14.25 ea.**
1539058 1956-58 Champion. . **\$19.00 ea.**
1544587 1959-60 Lark. **\$22.00 ea.**
1544589 1958-60 C & K. **\$22.00 ea.**
1551327 1961 Lark. **\$18.00 ea.**
1554368 1962-64 Hawk (export).
..... **\$22.00 ea.**
1554369 1962-64 Lark. Truck: 7E-8E: 5,
10. **\$29.00 ea.**



- 1563571**
1965-66 All.
... **\$16.50 ea.**

LOWER 6-CYLINDER

- 522159** 1941-48 M5 & M15 truck.
..... **\$22.50 ea.**
522160 1947-50 Champion. **\$22.50 ea.**
524781 1947-50 Commander. **\$29.90 ea.**
530881 1951-52 Champion. **\$21.25 ea.**
533087 1953-64 C & K, includes Hawk.
..... **\$30.00 ea.**
533092 1953-55 Champion sedan.
..... **\$24.75 ea.**
675736 1941-48 M16 & M17 truck.
..... **\$20.00 ea.**
801120 Truck: 2R-4E 1, 5, 10, 15. Replaces
673990 & 678660 & 673992. **\$27.50 ea.**
1539108 1956-58 Champion sedan
..... **\$24.75 ea.**
1539364 1956-64 Hawk. **\$22.00 ea.**
1548583 1959-60 Lark. **\$24.75 ea.**



- 1552785** 1961-64 Lark. **\$24.75 ea.**
1563627 1965-66 All.
..... **\$22.00 ea.**



UPPER V-8

- 530560** 1951-52 Commander. **\$22.00 ea.**
532174 1953-55 Commander & President
sedan. Pictured. **\$22.00 ea.**
532454 1953-55 Commander & President
C & K. **\$22.00 ea.**
1539059 1956-57 Commander &
President. **\$19.35 ea.**
1539087 1956 Golden Hawk.
..... **\$24.95 ea.**
1539157 1956 Power & Sky Hawk. 1957
Silver Hawk. **\$22.50 ea.**
1542335 1957 Golden Hawk. **\$22.50 ea.**
1543552 1957 Packard. **\$17.90 ea.**
1544588 1958 Commander & President &
1959-60 Lark. Truck: 5E: 7, 12.
..... **\$22.00 ea.**
1544590 1958-60 Hawk except 1958
Golden Hawk. **\$19.50 ea.**
1550652 1961-64 Lark. Truck: 6E-8E: 7,
12. **\$22.00 ea.**
1550980 1961-64 Hawk. **\$22.00 ea.**
1555934 1963-64 Avanti. **\$22.00 ea.**
1563558 1965-66. **\$28.50 ea.**
1685683 1956-64 C-cab trucks.
..... **\$19.50 ea.**
1700928 . 1966-85 Avanti w/o surge tank
or high output engine. Short. ... **\$20.50 ea.**
1700929 . 1966-85 Avanti w/o surge tank
or high output engine. Long. **\$22.50 ea.**

LOWER V-8



- 530131** 1951-52 Commander. ... **\$22.50 ea.**
532385 1953-55 Commander & President
sedans. **\$25.50 ea.**
532412 1953-55 C & K. **\$25.50 ea.**
800699 1966-83 Avanti **\$24.00 ea.**
1539084 1956 Golden Hawk. ... **\$24.95 ea.**
1539109 1956-60 Commander, President &
Lark. Truck: 5E 7, 12. **\$25.50 ea.**
1539129 1956-60 Hawk. **\$25.50 ea.**
1546378 1961-64 Hawk. **\$29.50 ea.**
1550654 1961-64 Lark. Truck: 6E-8E: 7, 12
..... **\$21.00 ea.**
1555929 1963-64 Avanti. **\$22.50 ea.**
1564983 1965-66 Lark. **\$16.90 ea.**
1685689 1956-64 C-cab truck. **\$21.00 ea.**

RADIATOR & HEATER HOSE WIRE CLAMPS

- G111616** For 1-3/4" radiator
hose. **\$2.50 ea.**
G111622 For 2-1/8" radiator
hose. **\$2.75 ea.**



- G272852** For 3/4" heater hose.
..... **\$1.00 ea.**

BAND TYPE CLAMPS

Clamps originally used on 1947-52 car,
1941-48 truck.



- 472-12** 13/16" **\$3.50 ea.**
472-14 7/8" **\$3.50 ea.**
472-15 15/16" **\$3.50 ea.**
472-24 1 1/2" **\$4.50 ea.**
472-30 1 7/8" **\$5.00 ea.**
472-34 2 1/8" **\$5.00 ea.**
472-35 2 3/16" **\$5.00 ea.**
472-39 2 5/16" **\$5.00 ea.**

RADIATOR CAPS

199952 Non-pressure.
1941-51 car.Truck:1941-54
Replacement. **\$12.00 ea.**



531826 7PSI radiator cap
1952-54 car, all models.
Truck: 1949-55 all models
and 1956-58 Champion with
6-cylinder. 1" deep, excellent
quality reproduction that looks just like the
original. **\$22.00 ea.**



536502 13 PSI radiator
cap. All 1956-58, all 1955
6-cylinder and 1955 V-8 with
536464 or 536465 radiators.
3/4" deep. NOS. **\$22.00 ea.**



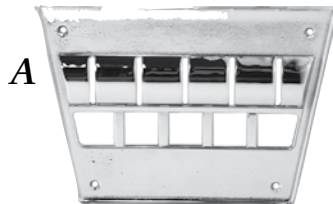
1551190 13 PSI. All 1955-
66 car & 1963-85 Avanti.
Truck: 1961-64. 3/4" deep.
Replacement. **\$8.75 ea.**



1551190X
14 PSI radiator cap. All
1955-66 car, 1963-85
Avanti. Truck: 1961-64. 3/4"
deep. Looks just like the
original with S.M. Co. stamping. Zinc plated.
..... **\$22.00 ea.**



HEATER CONTROL PLATES



- A. 1360025** 1964-85 Avanti. Chrome control
lever plate only without walnut or aluminum
overlay. **\$65.00 ea.**
B. NEW Listing - 677916P Heater
control nameplate. Truck: 2R-4E. **\$14.50 ea.**
B. NEW Listing - 1691696 Heater
control nameplate. Truck: 7E & 8E.
..... **\$14.50 ea.**

NEW 6-CYLINDER WATER PUMPS

GASKET included - NO CORE CHARGE
682630 1942-53 Champion. Truck: M5, late M15 and 1949-58 with Champion

..... **\$93.00 ea.**
1563639 1954-64 car, all models. Truck: 1959-60 with Champion engine and all 1961-64. **\$93.00 ea.**

REBUILT 6-CYLINDER WATER PUMPS

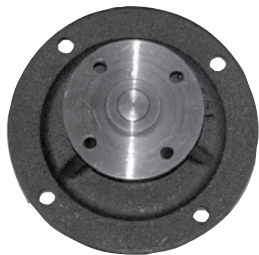
GASKET INCLUDED



** EXCHANGEABLE ONLY

184098 1935 Dictator. **\$345.75 Ex.****
186711 1936 Dictator. **\$345.75 Ex.****
192258 1937-42 Dictator, Commander & Coupe Express. **\$375.00 Ex.****
199654 1939-41 Champion. Truck: M5, early M15. **\$96.00 Ex.****
519442 1947-50 Commander. Truck: 1949-59 with Commander engine. . **\$138.00 Ex.****
534714 1954-58 Champ. **\$96.00 Ex.****
663286 Truck: 1941-48 M16-M17 with Commander engine. **\$160.00 Ex.****
682630R 1942-53 Champion. Truck: M5, late M15, 1949-58 with Champion engine. **\$93.00 Ex.****
1563639R 1959-64 car, all models. Truck: 1959-64. **\$93.00 Ex.****
1692116 Truck: 1960 5E with Commander 6-cylinder 6, 11, 14, 16. **\$115.00 Ex.****

NOTE: **BECAUSE OF A SHORTAGE OF CORES, WE MUST HAVE YOUR OLD RE-BUILDABLE PUMP FIRST BEFORE WE CAN SEND OUT THIS PUMP.



NEW V-8 WATER PUMP

GASKET INCLUDED
 NO CORE CHARGE

527070 Late 1951-64 car, all models except Avanti. Truck: 1954-64. **\$89.00 ea.**
527242 Early 1951 V-8. NOS. **\$125.00 ea.**
1560395 1963-64 Avanti. Not used on other R-Eng. cars. Pictured. **\$99.00 ea.**
1564459 1965-66 Lark. **\$80.50 ea.**

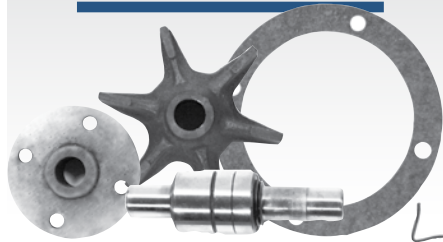
NOTE: ALL REBUILT AND NEW WATER PUMPS COME WITH A NEW MOUNTING GASKET. TO ORDER GASKETS SEPARATELY SEE "ENGINE" SECTION OF THIS CATALOG.

REBUILT 8 CYLINDER WATER PUMP - ** EXCHANGE ONLY

458410 1956 Golden Hawk. **\$112.00 Ex.****
516502 1938 - 40 President 8-cylinder. **\$149.35 Ex.****

**NOTE: BECAUSE OF A SHORTAGE OF CORES WE MUST HAVE YOUR OLD RE-BUILDABLE PUMP FIRST BEFORE WE CAN SEND OUT THIS PUMP.

WATER PUMP REBUILD KITS



S-371 1941 Champion. **\$60.00 ea.**
S-372 1941-42 President 8. **\$60.00 ea.**
530834 Early 1951 V-8. **\$65.00 ea.**
531171 1951-64 V-8. Picture. ... **\$65.00 ea.**
1548769 1959-61 170 6-cyl. ... **\$60.00 ea.**
1558226 1962-64 170 6-cyl. ... **\$65.00 ea.**

STUD-WATER PUMP MANIFOLD



527255 Water pump manifold & generator & alternator adjusting arm. 1951-64 V-8. **\$4.50 ea.**

WATER PUMP MANIFOLD GASKET



527240 Upper, water pump manifold gasket. 1951-64 V-8 & 1963-64 Avanti. Temp sender plate. Takes 2. **\$1.00 ea.**

527856 Lower, water pump manifold gasket. Lower, 1951-64 V-8 & 1963-64 Avanti Takes 2. **\$1.00 ea.**

WATER PUMP GASKETS

527246 1951-64 V-8 & 1963-64 Avanti. **\$2.00 ea.**



534597 1939-64 Champion 6-cyl. **\$2.00 ea.**

NEW Listing - 1564226 Water pump plate. 1965 - 66 V-8. **\$ 2.50 ea.**

NEW Listing - 1564228 Water pump. 1965-66 V-8. **\$ 2.50 ea.**

AIR VENTILATOR KIT & RELATED PARTS



801428 Air Ventilator Kit. 1953-64 C & K model. Includes replacement fiberglass housings (4 pieces) for left and right fenders along with rubber seals (10), springs (2), bolts & nuts. **\$235.00/kit**

AIR VENT HOUSING PIECES

284990 Front fender vent door, right or left. 1947-48 Champion. **\$30.00 ea.**

284995W Right side control lever. 1947-48 car. Chrome. **\$25.00 ea.**

286202 Front fender vent door, right or left. 1947-48 Commander. **\$30.00 ea.***

287648 Spring, vent door tension, right or left. 1947-52 car & 1957 sedan, left side only, 1953-56 sedan & 1953-64 coupe & Hawk. **\$5.50 ea.**

290162 Left, vent lid in fender. 1949 Champion, 1949-52 Champion & Commander. 1953-56 all, & 1959-64 C & K. **\$42.00 ea.**

290239P Front fender vent door, right or left. 1949 Commander. **\$30.00 ea.***

291097P Left front air duct housing for all 1950 car. **\$45.00 ea.**

293712P Front fender vent door, right side only. All 1951-52 car. **\$30.00 ea.**

294063X1 Right vent control cable & knob for early 1951 car. **\$20.00 ea.**

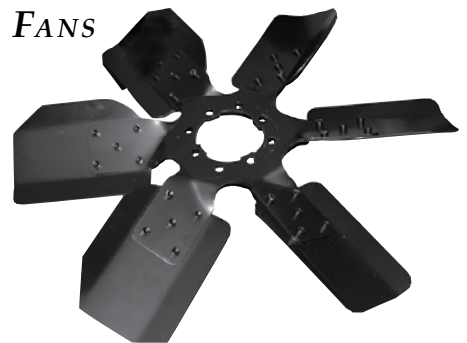
304184P Right, inner vent lid all complete with door, frame, hinge, & catch. 1953-64 C & K. **\$36.00 ea.**

522293 Right vent door tension spring for 1953-56 sedan & all 1953-64 coupe & Hawk. **\$5.50 ea.**

290165X3 Left front vent door control lever for 1956-58 car, zinc finish, also fits all 1949-53 car. **\$15.00 ea.**

1314319 Lever, right ventilator control. 1956-64. **\$12.50 ea.**

FANS



VISCOUS DRIVE

800356 Replacement fan for use with viscous drive on all models including 1963-64 Avanti. Six blades give improved cooling. **\$89.95 ea.**

NOTE: THIS LARGER CAPACITY FAN PRODUCES MORE NOISE THAN THE ORIGINAL. THIS IS ESPECIALLY NOTICEABLE ON AVANTI. FOR USE WITH VISCOUS DRIVE ONLY.

1560257 Fan clutch. Replacement unit saves power, gives better cooling & reduces noise. 1963-64 all models with viscous including Avanti. **\$79.95 ea.**



NONVISCIOUS DRIVE FANS

- 525047** 4-blade. 1947-49 Commander. Truck: 2R 6, 11, 14, 16, 17. **\$65.00 ea.**
530192 4-blade. 1951-53 V-8. . **\$75.00 ea.**
677063 6-blade. Truck: M16, 17. 2-R 16, 17. **\$95.00 ea.**
682919 4-blade. Truck: 3R. E. 2E 6, 11 14, 16, 17. 3E-4E 3, 6, 11, 14, 16, 17. **\$85.00 ea.**
1540159 4-blade. 1956-60 sedan & wagon V-8. Truck: 5E - 6E 7, 12. **\$125.00 ea.**
1542138 4-blade. 1956 Golden Hawk. **\$135.00 ea.**
1552246P 6-blade Heavy Duty. 1961-63 6-cylinder. **\$65.00 ea.**
1556170 4-blade. Truck: 7E-8E 7, 12. 8E 13, 28, 40 late. **\$65.00 ea.**
1561633 4-blade. 1964 Lark 6-cylinder without air conditioning. Truck 8E 5, 10 late. **\$50.00 ea.**
1564695 4-blade. 1965-66 6-cylinder & V-8 without air conditioning. **\$60.00 ea.**
1565484 6-blade. 1965 - 66 Lark V-8 with air conditioning. **\$75.00 ea.**
1692378 6-blade. Truck: Special order V-8 5E - 8E 7, 12, 13, 28, 40. Will also work as a heavy duty replacement on V-8 models requiring extra cooling. **\$75.00 ea.**
1694205 6-blade. Truck: 7E - 8E 35, 45. **\$75.00 ea.**
1696462 6-blade. Truck: 8E 15, 25. **\$75.00 ea.**



FRESH AIR VENT SCREEN

- 285005P** 1947-52 sedan, left and right side, 1953-57 sedan, right side, 1953-64 C & K (includes Hawk), right side. **\$22.00 ea.**

THERMOSTATS

Gaskets are not included.

- 531470** 160°. Truck: 2R-5E 1, 5, 10, 15 & 6E-8E 5, 7, 10, 12, 13, 28, 40. **\$10.25 ea.**



- 533247** 160°. 1938-42 Commander & President, 1947-50 Commander 6-cylinder, 1951-60 V-8 except 1956 Golden Hawk. Truck: M16, M17 & 2R-5E except 1, 5, 10, 15. **\$12.35 ea.**
533257 180°. 1938-42 Commander & President, 1947-50 Commander 6-cyl., 1951-60 V-8 except 1956 Golden Hawk. Truck: M16, M17 & 2R-5E except 5, 10, 15. **\$15.25 ea.**
1540787 170° 1938-42 Commander & President, 1947-50 Commander 6-cylinder, 1951-60 V-8 except 1956 Golden Hawk. Truck: M16, M17 & 2R-5E except 5, 10, 15. NOS. **\$18.00 ea.**
1560842 160°. 1939-60 Champion. 1956 Golden Hawk, 1961-66 car, all models & 1963-85 Avanti. Truck: M5, M15, M15A. **\$10.50 ea.**
1560843 180°. 1939-60 Champion. 1956 Golden Hawk. 1961-66 car, all models & 1963-85 Avanti. Truck: M5, M15, M15A. **\$12.80 ea.**

FAN SHROUDS

Availability is extremely limited on some NOS units.



- 524605** 1950 Commander. **\$95.00 ea.**
524957 1950 Champion. **\$95.00 ea.**
535263P 1954-55 Champion, sedan, & wagon. **\$95.00 ea.**
535274 1954 Commander sedan. **\$95.00 ea.**
800700 1966-85 Avanti. All models without electric fan. **\$179.00 ea.**
1542867P 1957 Packard with air conditioning. **\$120.00 ea.**
1546334P 1958 Hawk V-8, right hand drive, all except Golden Hawk. Also fits all V-8 1959-64 Hawks w/o air conditioning. .. **\$140.00 ea.**
1546341P 1958 Hawk 6-cylinder cars with right hand drive. Also fits all 6-cylinder 1959-64 Hawks w/o air conditioning. **\$140.00 ea.**
NEW Listing - 1547053 1959-60 Lark V-8. **\$150.00 ea.**
1547097 1958 Silver Hawk V-8. **\$140.00 ea.**
1548467P 1959-60 Lark 6-cylinder. **\$150.00 ea.**
1550696 1961-64 Lark 6-cyl. **\$150.00 ea.**
1550705 1961-64 Lark V-8. **\$150.00 ea.**
1557508P 1961-64 6-cylinder Lark. **\$95.00 ea.**
1560614 1963-64 Avanti. **\$179.00 ea.**
1560614X1 1963-64 Avanti with open bottom for easier removal. Pictured. **\$169.00 ea.**
1685691P 1956 2E truck, models 7 through 38. Any with Commander 6-cyl. or V-8 engines. Left side only. **\$75.00 ea.**
1695995 1963-64 8E 15 & 25. ... **\$147.50 ea.**

THERMOSTAT HOUSING GASKETS

- 186888** 1936-50 Commander 6-cyl. **\$1.50 ea.**
194658 1939-60 Champion. Thermostat sleeve. **\$1.00 ea.**
194660 1939-60 Champion 6-cyl. **\$1.25 ea.**
527284 1951-60 V-8. . **\$1.50 ea.**
1550816 1961-64 6-cyl. & 1961-64 V-8 including Avanti. **\$1.50 ea.**
NEW Listing - 1564064 1965 - 66 6-cylinder. **50¢ ea.**
1564066 1965-66 V-8 & 1966-85 Avanti. **\$1.50 ea.**

THERMOSTAT SPACER

- 196709** 1939-60 Champion 6-cyl. **\$8.50 ea.**

WATER OUTLET

(Thermostat housing)



- 518062** Car: 1947-49 Commander. Truck: 1949-59 all with Commander 6. **\$30.00 ea.**
529412 Car: 1956-60 V-8 all except C & K. Truck: V-8 all models 1954-64 except 6E through 8E 7 & 12. **\$30.00 ea.**
532115 Car: 1953-60 Champion 6 cylinder. Truck: 5-E 5. **\$30.00 ea.**
532383 Car: V-8 1953-55 all, 1956-60 C & K. **\$30.00 ea.**
1539099 1956 Golden Hawk. . **\$65.00 ea.**
1550844 1961-64 all 6-cylinder & V-8 car, except Avanti Pictured. Truck: 6E - 8E 7 & 12. **\$35.00 ea.**
NEW Listing - 1564065 1965 - 66 6-cylinder. **\$25.00 ea.**

WATER TEMPERATURE SENDERS

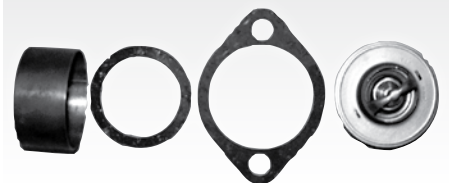
- 530127** 1950-52 car all models, 6-V. **\$45.00 ea.**
532579 1953-55 car all models, 6-V. **\$45.00 ea.**
1543609 1957-58 Packard. **\$26.00 ea.**
1545220 Late 1957-64 V-8 all models including Avanti. Truck: 3E-4E 1, 5, 10 & 3E-8E 2, 7, 12, 13, 28, 38, 40 **\$28.00 ea.**
***1549452** 1959-64 6-cylinder. Truck: 4E-8E 1, 5, 10. **\$28.00 ea.**
1565609 All 1965-66. **\$36.00 ea.**

*Currently on back order as of publication.

DEFROSTER "T"

- 198653** Connects heater & defroster hoses. All models with heater under the seat. **\$24.00 ea.**

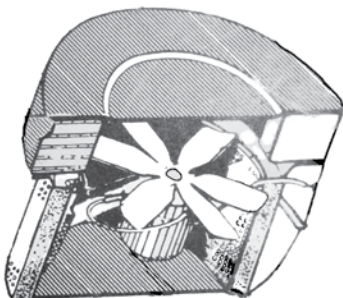
THERMOSTAT, SPACER & GASKET SETS



(INCLUDES 194660 & 194658 GASKET, 196709 SPACER & 1560842 OR 1560843 THERMOSTAT)

- 801371** 160° 1939-60 Champion 6-cylinder. **\$17.50 ea.**
801372 180° 1939-60 Champion 6-cylinder. **\$17.50 ea.**

HEATER CORE (Circular Type)



515428 1942 Commander and President. Does not include fan, motor, or filter as shown in illustration. **\$150.00 ea.**

HEATER CORES

- 517890** 1947-52 cars. All models. **\$325.00 Ex.**
524234 1941-48 M-series truck **\$325.00 Ex.**
527350 1953-58 all cars plus 59-62 Hawk. **\$325.00 Ex.**
680717 Early 2R truck, type "A" heater. **\$225.00 Ex.**
681254 2R truck with type "B" heater. **\$325.00 Ex.**
681470 2R truck with type "C" heater. First type. **\$325.00 Ex.**
684656 2R truck with type "C" heater. 2nd type and all 3R (1954) through 3E (1958) and early 4E (1959). **\$325.00 Ex.**
1552127 1961-63 Lark. **\$325.00 Ex.**
1556925 1963-85 Avanti. ... **\$325.00 Ex.**
1561425 1964-66 Lark. **\$325.00 Ex.**
1691703 Late 4E (1959) through 6E (1961) C-cab trucks and 7E & 8E C-cab trucks with type "A" heater. **\$325.00 Ex.**
1695417 7E (1962) and 8E (1963-64) C-cab trucks model: 15, 25, 35, & 45 with type "B" heater. **\$325.00 Ex.**
1695442 Car: 1959-60 Lark and 1963-64 G.T. Hawk. Truck: 1960-64 C-cab. **\$325.00 Ex.**

NOTE: ALL CORES LISTED ARE EITHER NEW OR RECONDITIONED AND ARE GUARANTEED FOR ONE YEAR FROM DATE OF PURCHASE. ALL CORES ARE SOLD ON AN EXCHANGE BASIS AND WE REQUIRE YOUR OLD CORE FIRST.

PLEASE ALLOW 30 DAYS FOR SHIPPING.

New!

HEATER CORE COVER



NEW - Listing 1549706

Fiberglass. 1959 - 60 Lark, 1963 - 64 Hawk. Truck: 1960 - 64 Champ.... **\$85.00 ea.**

HEATER BLOWER TUBE



NEW Listing - 533981 Tube, heater blower hose to heater core cover, 1953-58 car, all models & 1959-62 Hawk. Fiberglass **\$95.00 ea.**

HEATER SEALS

519358 Seal. Air duct to fender apron. 1947-52 car, all models. **\$4.00 ea.**

519409 Heater neck seal. For all models with heater under seat Takes 2..... **\$2.00 ea.**

1332334 Seal, heater plenum to inner fender. 1959-60 Lark. 1963-64 Hawk. Truck: 1960-64 Champ. **\$8.50 ea.**

1339224 Seal, heater core housing. 1961-66 Lark. **\$8.50 ea.**
1556923 Seal, heater core housing. 1963-85 Avanti **\$8.50 ea.**

1556912 Seal, heater housing to firewall. 1963-85 Avanti **\$5.50 ea.**

1556913 Seal, heater housing to side panel. 1963-85 Avanti. **\$6.50 ea.**

HEATER PARTS 1947-66

195407 Heater hose clamp. Holds 2 hose. 1939-66, most models. **\$6.50 ea.**
293762 Grommet, through dash, heater motor cable. 1951-52 car. **\$3.50 ea.**

519799 Moulded, defroster blower hose. 1947-48, all models. **\$20.00 ea.**
520201 Fan blades for heater blower motor. All 1947-52 car and 1957 sedan. **\$22.00 ea.**

520280 Grommet or rubber boot "thru dash" for control valve cable, 1947-49 car. **\$3.00 ea.**
523056 Circuit breaker. 1947-50, all models. **\$25.00 ea.**

524853 Heater core housing, under passenger seat. 1949-58 car. **\$39.00 ea.**
526246 Control valve cable and handle, 1950 car. **NLA**

529497 Air duct housing, right side fender vent housing to blower hose. 1947-52 car. **\$75.00 ea.**
530283 Heater valve control cable. 1951 car. **\$10.00 ea.**
531749 Heater valve control cable. 1952 car. **\$10.00 ea.**

532523X1 Heater control cable. 1953-55 except C & K. **\$25.00 ea.**
533302P Bracket for heater valve cable, mounts under dash. All 1953 car. **\$12.00 ea.**

535124P Bracket for heater valve cable, mounts under dash. All 1954 car & 1955 without wraparound windshield. **\$8.50 ea.**
679393 Adapter fitting for control valve, screws into cylinder head. 1947-49 car. **\$8.50 ea.**

1539973 Heater cable control assembly, mounts on dash. 1956 sedan & wagon. **\$22.00 ea.**
1541983 Heater cable control assembly, mounts on dash. 1957-58 car. **\$22.00 ea.**
1542173 Heater valve control cable, 1957 sedan & wagon. **\$8.50 ea.**
1542174 Heater valve control cable, 1957 Hawk. **\$8.50 ea.**

HEATER CONTROL VALVES

New production & NOS - no core required.

519368 1947-49 car, all models, most 1949-59 trucks, 1939-42 cars, all models NOS

..... **\$100.00 ea.**

1554534 1962-66 Lark.*

..... **\$89.95 ea.**

1557364 1963-75 Avanti.* Requires some modification for mounting. **\$89.95 ea.**

1558697 1963-64 Hawk.* **\$89.95 ea.**

*HOT & COLD SETTINGS ARE REVERSED.



REBUILT HEATER CONTROL VALVES

They look & function as new. Sold exchange only!

NOTE: WE MUST RECEIVE YOUR OLD ONE FIRST. PLEASE CALL BEFORE ORDERING.

526611 1950 all models. **\$89.95 Ex.**
530100 1951-52 all models **\$89.95 Ex.**
532880 1953-57 all models & 1962 Hawk. **\$89.95 Ex.**

1554534X 1962-66 Lark. **\$89.95 Ex.**
1557364X 1963-75 Avanti **NLA**
1558697X 1963-64 Hawk. call for availability

HEATER VALVES



THESE REPLACEMENT HEATER VALVES CLOSELY RESEMBLE THE ORIGINAL VALVES. EXCEPT THE ON/OFF POSITIONS ARE REVERSED. IF YOUR CONTROLLER IS PRESENTLY PUSHED IN WHEN TURNED OFF IT WILL NOW BE PULLED OUT TO BE OFF. IF MOVING THE LEVER TO THE LEFT TURNS IT OFF THAN THE OFF POSITION WILL NOW REQUIRE SLIDING THE LEVER TO THE RIGHT.

800782 Replacement for various models. Has 3/4" X 3/4" hose fittings. Wire pulls to close valve. **\$88.80 ea.**
800783 Replacement for various models. Has 5/8" X 5/8" hose fittings. Wire pulls to close valve. **\$88.30 ea.**

HEATER ELBOWS & NIPPLES

NEW Listing - 522850 Elbow, heater hose to cylinder head. 1947-52 6-cylinder. **\$12.50 ea.**

531543 Nipple, inlet hose to water pump manifold & outlet hose to water pump. 1955-58 V-8 Takes 2. **\$12.00 ea.**

537833 Elbow, inlet to cylinder head, also outlet to water pump. 1953-58 Champion. Takes 2. **\$8.00 ea.**

1548305 Nipple, heater hose to water manifold. 1959-64 most model car & truck. **\$7.50 ea.**

1692762 Elbow, heater hose to water manifold. 1959-64 most model cars and trucks. **\$7.50 ea.**



HEATER HOSES

- 800955** Black 3/4" heater hose for all 1959-66 models, including 1963-85 Avanti. 8' length. **\$10.50 ea.**
801972 Black 5/8 heater hose for most models through 1962. 16' length. **\$15.00 ea.**

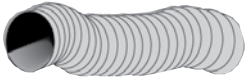


- 1555917** Heater hose with molded ends for 1963-64 Hawk. Connects to heater core on fender apron to thermostat valve on firewall. **\$15.00 ea.**

HEATER/DEFROSTER MOTORS

- 519419P** Defroster heater coil. 1947-58 car, all models & 1959-62 Hawk. **\$60.00 ea.**
534238 Heater. 1953-55 car, all models. **\$110.00 ea.**
1540100 Defroster. 1956-58 all models, 1959-61 Hawk. **\$185.00 ea.**
1542747 Heater. 1957-58 sedan **\$85.00 ea.**
1552255 Heater. 1959-61 Lark **\$100.00 ea.**
1554985 Heater. 1962 Hawk. **\$100.00 ea.**
1554990 Heater. 1962 Hawk with auxiliary heater. **\$90.00 ea.**
1556924 Heater & defroster. 1963-85 Avanti. **\$185.00 ea.**
1558701 Heater & defroster. 1963-64 Hawk **\$85.00 ea.**
1558703 Blower assembly. 1963-64 GT Hawk. **\$135.00 ea.**
1561261 Heater & defroster. 1962-66 Lark. **\$100.00 ea.**
1561418 Heater. 1962-66 Lark **\$100.00 ea.**

HEATER/DEFROSTER DUCTS



- 800514** Defroster. 1-3/4" X 6'. 1949-58 all models. Takes 1. **\$35.00 ea.**
800515 Defroster. 2" X 6", 1959-66 all models & 1963-85 Avanti. Takes 1. **\$33.75 ea.**
800516 Left fender fresh air intake. 3-1/2". 1957-58 sedan. 1959-60 Lark. Truck: 1960-64 Champ. **\$6.35 ft.**
800517 Heater motor to under seat. 4" X 72". 1947-60 all models. 1961-62 Hawk. **\$49.50 ea.**
800517X1 Heater plenum to firewall. 4". 1959-60 Lark, 1963-64 Hawk. Truck: 1960-64 Champ. Limited to 3 continuous feet. **\$8.25/per ft.**
801816 Right fender air intake hose 4". 1947-52 car. Includes one 32" piece & one 6" piece. **\$25.00/set**

HEATER DUCT CLAMPS

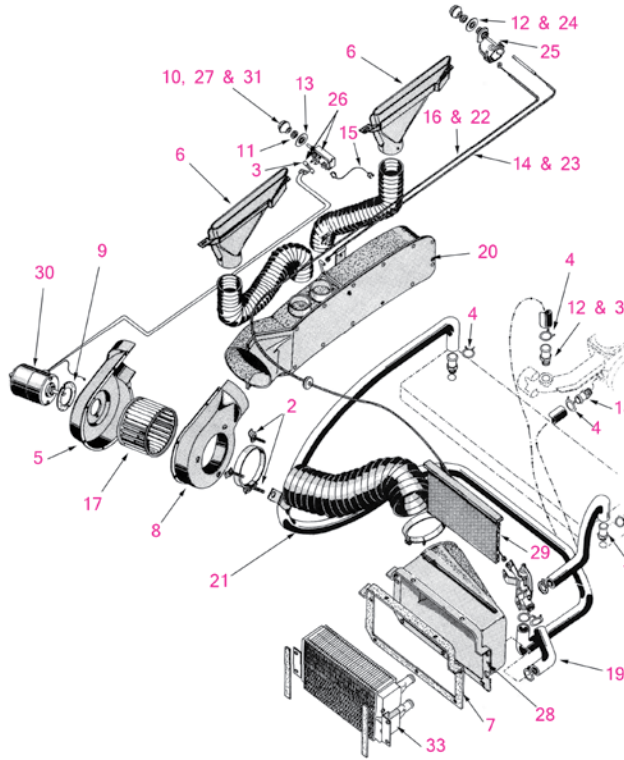
- G451236** 3 1/2". NOS. **\$4.50 ea.**
G451244 4". NOS. **\$6.50 ea.**



HEATER/DEFROSTER VALVES & SEALS

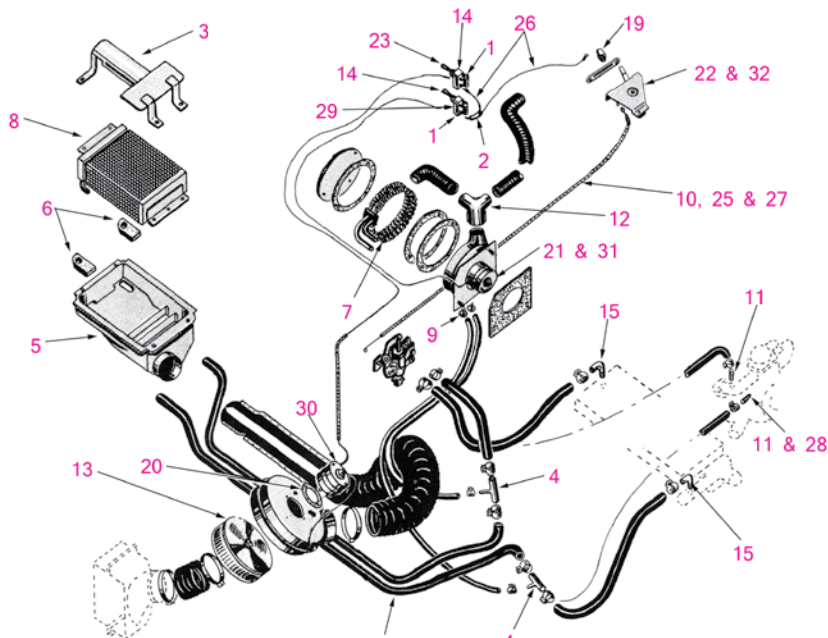
- 800524** Air vent seals. 1963 Avanti. **\$15.00 kit**
800525 Air vent seals. 1964-85 Avanti. **\$15.00 kit**
1556916 Heater/defrost valve. 1963-85 Avanti. NOS. **\$22.50 ea.**

HEATER & DEFROSTER PARTS 1959-60 Lark & 1960-64 Champ truck



1. **2081X7** Mounting screw for air duct. Takes 2. **.70¢ ea.**
2. **3081X2** Bolt and clip to dash for lower blower hose. 1959-60 Lark. Truck: 1960-64 Champ. Takes 3. **70¢ ea.**
3. **G120151** Fuse, fan switch. 1959-60 Lark. Truck: 1960-64 Champ. **\$1.50 ea.**
4. **G272852** 3/4" hose clamp. 1959-60 Lark. Truck: 1960-64 Champ. **\$1.00 ea.**
5. **534273** Blower housing, rear half. 1959-60 Lark. **\$18.00 ea.**
6. **1331665** Defroster outlet. 1959-60 Lark. Truck: 1960-64 Champ. **\$22.50 ea.**
7. **1332334** Gasket, core housing. 1959-60 Lark. Truck: 1960-64 Champ. **\$8.50 ea.**
8. **1348276P** Blower housing, front half. 1959-60 Lark. Truck: 1960-64 Champ. **\$18.00 ea.**
9. **1540092** Gasket, blower motor to housing. 1959-60 Lark. Truck: 1960-64 Champ. **\$5.00 ea.**
10. **1543617** Knob, valve control. 1959-60 Lark regal. Chrome. **\$16.00 ea.**
11. **1547329** Escutcheon, "Air". 1959-60 Lark. Truck: 1960-64 Champ. **\$7.50 ea.**
12. **1547331** Escutcheon, "Heat". 1959 Lark. **\$7.50 ea.**
13. **1547334** Switch with fuse. 1959 Lark. Heater & Defroster. **\$27.00 ea.**
14. **1547690** Cable & conduit, control to valve. 1959 Lark. Type A. **\$12.50 ea.**
15. **1547697** Cable, fan switch to ignition. 1959-60 Lark. Truck: 1960-64 Champ. **\$7.50 ea.**
16. **1548255** Heater valve control cable, 1959 Lark w/type "A" heater control (See page #9 in 1959-64 body parts book). **\$10.00 ea.**
17. **1548271** Blower fan. 1959-60 Lark. Truck: 1960-64 Champ. **\$26.00 ea.**
18. **1548305** Nipple, on engine and water manifold. 1959-60 Lark. Truck: 1960-64 Champ. **\$7.50 ea.**
19. **1548314** Formed hose, valve to core inlet. 1959-60 Lark V-8. Truck: 1960-64 Champ V-8. **\$8.00 ea.**
20. **1548378** Air distribution duct. 1959-60 Lark. Truck: 1960-64 Champ. **\$76.00 ea.**
21. **1548497X1** Formed hose, engine to control valve. 1959-60 Lark V-8. Truck: 1960-64 Champ V-8. **\$13.50 ea.**
21. **1548497X3** Formed heater hose, engine to control valve. 1959-60 Lark 6. **\$39.95 ea.**
22. **1549153** Cable & conduit, control to valve. 1959-60 Lark. Truck: 1960-64 Champ. **\$15.00 ea.**
23. **1549157** Cable & conduit, control to valve. 1959-60 Lark. Truck: 1960-64 Champ. Type B. **\$8.50 ea.**
24. **1549161** Escutcheon, "Heat - Pull". 1959-60 Lark. Truck: 1960-64 Champ. **\$5.75 ea.**
25. **1549346** Control, heater & defroster. 1960 Lark. Truck: 1960-64 Champ. **\$25.00 ea.**
26. **1549565** Switch with fuse. 1960 Lark. Truck: 1960-64 Champ. **\$30.00 ea.**
27. **1549590** Knob, valve control (white). 1960 Lark Deluxe. **\$8.50 ea.**
28. **1549706** Housing, heater core. 1959-60 Lark. Truck: 1960-64 Champ. **\$85.00 ea.**
29. **1550084** Filter. 1959-60 Lark. Truck: 1960-64 Champ. **\$22.50 ea.**
30. **1552255** Blower motor. 1959-60 Lark. Truck: 1960-64 Champ. **\$100.00 ea.**
31. **1554118** Black knob, valve control. 1959 Lark deluxe. Truck: 1960-64 Champ. **\$12.50 ea.**
32. **1692762** Elbow, on water manifold. 1959-60 Lark. Truck: 1960-64 Champ. **\$7.50 ea.**
33. **1695442** Heater core, rebuilt exchange. 1959-60 Lark. Truck: 1960-64 Champ. **\$325.00 Ex.**
34. **1539888** Knob, valve control. Black. 1960-61 Champ truck. **\$8.50 ea.**
3148X1 Push nut. Used when installing 1548271 fan blades. **\$1.25 ea.**
1332060 Right, heater & fresh air valve. 1959-60 Lark. Truck: 1960-64 Champ. **\$22.00 ea.**
1332061 Left, heater & fresh air valve. 1959-60 Lark. Truck: 1960-64 Champ. **\$22.00 ea.**

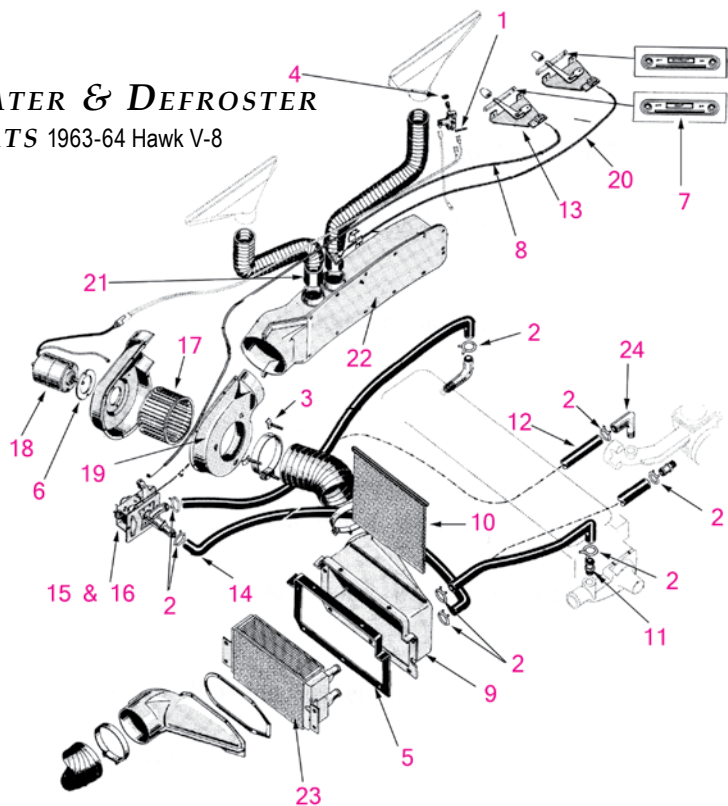
HEATER & DEFROSTER PARTS 1959-62 Hawk



- | | |
|--|---|
| 1. G147685 Defroster fuse. 1959-62. \$1.00 ea. | 9. 530097 Clip to dash. 1959-62. \$3.95 ea. |
| 2. 192545 Connector, motor to switch cable. 1959-61. \$3.95 ea. | 10. 531534 Clip, control cable to dash. 1959-62. \$1.00 ea. |
| 3. 198650P Outer cover, defroster heater coil. 1959-62. \$7.00 ea. | 11. 531546 Nipple, upper water manifold. 1959-62. \$7.00 ea. |
| 4. 198653 Defroster "T" fitting. 1959-62. \$24.00 ea. | 12. 532433 Defroster outlet. 1959-62. \$12.50 ea. |
| 5. 198777P Inner cover, defroster heater coil. 1959-62. \$7.00 ea. | 13. 532871 Blower fan. 1959-62. Use 1548271. \$26.00 ea. |
| 6. 519409 Grommet, heater core to housing. 1959-62. Takes 2. \$2.00 ea. | 14. 536350W Retaining nut, fan switch to dash. 1959-62. \$5.50 ea. |
| 7. 519419P Defroster heater coil. 1959-62. \$60.00 ea. | 15. 537833 Elbow to cylinder head. 1959-62 6-cylinder. \$8.00 ea. |
| 8. 527350 Heater core, rebuilt exchange. 1959-62. \$325.00 Ex. | 16. 1331665 Defroster outlet. 1959-60. \$22.50 ea. |

- | |
|--|
| 17. 1338766 Right defroster outlet. 1961-62. \$24.00 ea. |
| 18. 1338767 Left defroster outlet. 1961-62. \$24.00 ea. |
| 19. 1540033 Knob, valve control. 1959-62. \$12.50 ea. |
| 20. 1540092 Gasket, motor to blower. 1959-62. \$5.00 ea. |
| 21. 1540100 Defroster motor, 1959-61. \$185.00 ea. |
| 22.. 1541983 Heater temperature control. 1959-61. \$22.00 ea. |
| 23. 1544278 Defroster fan switch, 1959-61. \$32.50 ea. |
| 24. 1544548 Clip, hose to fender. 1959-62. \$3.95 ea. |
| 25. 1544549 Cable & conduit, control to valve, 43-1/4". 1959-61. \$10.00 ea. |
| 26. 1545032 Cable, heater & defroster switch to ignition. 1959-61. \$7.00 ea. |
| 27. 1545870 Wire, control to valve, 43-1/4". 1959-61. \$3.95 ea. |
| 28. 1553804 Nipple to water manifold with air conditioning. \$4.00 ea. |
| 29. 1554978 Heater fan switch with fuse, 1962. \$36.00 ea. |
| 30. 1554985 Heater motor. 1962. \$100.00 ea. |
| 31. 1554990 Defroster motor. 1962 with auxiliary motor. \$90.00 ea. |
| 32. 1555755 Heater temperature control. 1962. \$20.00 ea. |
| 800517 Hose, heater motor to under seat. 4" X 72". 1961-62 Hawk. \$49.50 ea. |

HEATER & DEFROSTER PARTS 1963-64 Hawk V-8



HEATER & DEFROSTER PARTS 1963-64 Hawk V-8

- | |
|---|
| 1. G147685 Fuse, on heater switch. 1963-64. \$1.00 ea. |
| 2. G272852 3/4" hose clamp. 1963-64. \$1.00 ea. |
| 3. 3081X10 Bolt, blower assembly to dash. 1963-64. \$2.50 ea. |
| 4. 536350W Chrome retainer nut, fan switch to inst. panel. 1963-64. \$5.50 ea. |
| 5. 1332334 Gasket, heater core housing to fender. 1963-64. \$8.50 ea. |
| 6. 1540092 Gasket, blower motor to housing. 1963-64. \$5.00 ea. |
| 7. 1541980 Chrome bezel, "Heat" control. 1963-64. \$12.80 ea. |
| G157105 Screw to instrument. panel. 1963-64.70¢ ea. |
| 8. 1542174 Cable & conduit, heater temp control to valve. 1963-64. \$8.50 ea. |
| 9. 1549706 Housing, heater core. 1963-64. \$85.00 ea. |
| 10. 1550084 Filter, heater core housing. 1963-64. \$22.50 ea. |
| 11. 1552366 Water manifold lower nipple. 1963-64. \$12.50 ea. |
| 12. 1553640 Heater hose, engine to control valve. 1963-64. \$16.50 ea. |
| 13. 1555755 Temperature control lever. 1963-64. \$20.00 ea. |
| 14. 1555917 Formed heater hose, control valve to core inlet. 1963-64. \$15.00 ea. |
| 15. 1558697 Control valve (hot & cold settings reversed). 1963-64. \$89.95 ea. |
| 16. 1558697X Control valve. Rebuilt exchange. 1963-64. Call before ordering. \$89.95 Ex. |

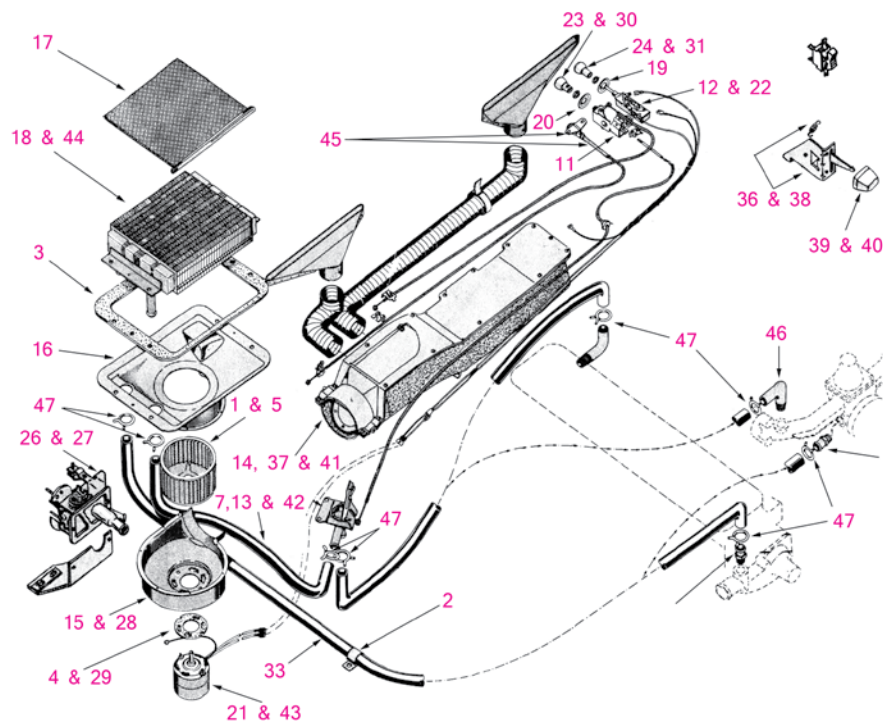
HEATER & DEFROSTER PARTS 1963-64 Hawk V-8 (Continued)

17. **1558698** Blower fan. 1963-64.
..... **\$26.00 ea.**
18. **1558701** Blower motor. 1963-64.
..... **\$85.00 ea.**
19. **1558702** Blower housing, front half.
1963-64. **\$16.50 ea.**
20. **1558772** Cable & conduit, defroster
control to distribution box. 1963-64.
..... **\$7.00 ea.**
21. **1558783** Adapter, defroster hose to
distribution box. 1963-64. **\$3.95 ea.**
22. **1561513** Air distribution duct. 1964
..... **\$75.00 ea.**
23. **1695442** Heater core, rebuilt exchange.
1963-64. **\$325.00 Ex.**
24. **1692762** Water manifold upper elbow.
1963-64. **\$7.50 ea.**
1331825 Cable retainer clip. **\$2.50 ea.**

HEATER & DEFROSTER PARTS 1961-66 Lark

1. **532871** Blower fan. 1962-66 Lark.
..... **\$26.00 ea.**
2. **1312347** Clip to fender apron or cowl.
1961-66 Lark. **\$3.95 ea.**
3. **1339224** Gasket, housing to body. 1961-
66 Lark. **\$8.50 ea.**
4. **1540092** Gasket, motor to housing. 1961
Lark. **\$5.00 ea.**
5. **1548271** Blower fan. 1961 Lark.
..... **\$26.00 ea.**
6. **1548305** Nipple, heater hose to engine.
1961-66 Lark. **\$7.50 ea.**
7. **1548497X1** Formed hose, control valve
to core inlet. 1961 Lark. **\$13.50 ea.**
8. **1549155** Cable & conduit, control to
temperature valve. 1961 Lark. **\$20.00 ea.**
9. **1549157** Cable & conduit, control
to temperature valve. 1963 Lark. Control
to defroster valve, 1961 Lark without air
conditioning and 1962 Lark. **\$8.50 ea.**
10. **1549160** Cable & conduit, heater
control to defroster valve. 1961 Lark with air
conditioning. **\$7.00 ea.**
11. **1549346** Control, heater & defroster.
1961-62 Lark. **\$25.00 ea.**
12. **1549565** Fan switch with fuse. 1961
Lark. **\$30.00 ea.**
13. **1555179** Formed hose, control valve to
core inlet. 1962 Lark. **\$5.00 ea.**
14. **1552031** Air distribution duct. 1961-62
Lark. **\$76.00 ea.**
15. **1552055** Blower housing, lower half.
1961 Lark. **\$18.50 ea.**
16. **1552056** Housing, heater core. 1961-66
Lark. **\$32.00 ea.**
17. **1552094** Filter. 1961-66 Lark.
..... **\$22.50 ea.**
18. **1552127** Heater core, rebuilt exchange.
1961-63 Lark. **\$325.00 Ex.**
19. **1552177** Escutcheon, "Fan". 1961-62
Lark. **\$7.00 ea.**

HEATER & DEFROSTER PARTS 1961 - 66 Lark



20. **1552178** Escutcheon, heater valve
control. 1961-62 Lark. **\$7.00 ea.**
21. **1552255** Blower motor. 1961 Lark.
..... **\$100.00 ea.**
22. **1553638** Formed hose, engine to
control valve. 1961 Lark 6-cyl. **\$17.50 ea.**
23. **1554118** Black knob, heater valve
control. 1961 Lark. **\$12.50 ea.**
24. **1554118** Black knob, fan switch. 1961
Lark. **\$12.50 ea.**
25. **1554524** Cable & conduit, control to
temperature valve. 1962 Lark. **\$12.50 ea.**
26. **1554534** Heater control valve, 1962-66
Lark. Hot & cold settings are reversed.
..... **\$89.95 ea.**
27. **1554534X** Heater control valve, rebuilt
exchange. 1962-66 Lark. **\$89.95 Ex.**
28. **1554930** Blower housing, lower half.
1962-66 Lark. **\$17.50 ea.**
29. **1554932** Gasket, motor to housing.
1962-66 Lark. **\$2.00 ea.**
30. **1554974** White knob, heater valve
control. 1962 Lark. **\$12.50 ea.**
31. **1554974** White knob, fan switch. 1962
Lark. **\$12.50 ea.**
32. **1555074** Fan switch with fuse. 1962
Lark. **\$41.00 ea.**
33. **1555910** Formed hose, core outlet to
water pump. 1962-63 Lark 6-cyl. **\$17.50 ea.**
34. **1557684** Cable & conduit, heater control
to defroster valve. 1963-66 Lark. **\$7.50 ea.**
35. **1557686** Cable & conduit, control to
temperature valve. 1964-66 Lark. **\$8.50 ea.**
36. **1558834** Control, heater & defroster.
1963 Lark. **\$12.00 ea.**
37. **1558927** Air distribution duct. 1963
Lark. 1964-66 Lark with air conditioning.
..... **\$76.00 ea.**
38. **1560365** Control, heater & defroster.
1964-66 Lark. **\$12.00 ea.**
39. **1560516W** Knob, "Heat". 1963-66
Lark. **\$8.00 ea.**
40. **1560517W** Knob, "Def", defroster valve
control. Chrome. 1963-66 Lark. **\$8.00 ea.**
41. **1560957** Air distribution duct. 1964 Lark
without air conditioning & all 1965-66.
..... **\$85.00 ea.**
42. **1561307** Formed hose, control valve to
core inlet. 1964-66 Lark. **\$8.50 ea.**
43. **1561418** Blower motor. 1964-66 Lark.
..... **\$100.00 ea.**
44. **1561425** Heater core, rebuilt exchange.
1964-66 Lark. **\$325.00 Ex.**
45. **1562151** Cable & conduit, air intake
valve. 1964-66 Lark. **\$24.00 ea.**
46. **1692762** Elbow, heater hose to water
manifold. 1961-64 Lark. **\$7.50 ea.**
47. **G272852** 3/4" hose clamp. 1961-66 Lark.
..... **\$1.00 ea.**
1548225 Cable for air intake valve. Located
in air distribution duct under dash. 1961-66
Lark. **\$26.00 ea.**
1548497X15 Formed heater hose, control
valve to heater core outlet to water pump. 1962-
63 V-8 Lark. **\$39.95 ea.**
1548497X18 Formed heater hose, engine
to control valve. 1962-64 Lark. **\$44.00 ea.**
1558927 Air distribution duct, 1963-64 Lark
with air conditioning. **\$76.00 ea.**
1559745 Formed heater hose (short) to core
inlet. 1963 Lark. **\$12.50 ea.**
1561307 Formed heater hose, control valve
to heater core inlet, 1964 Lark. **\$8.50 ea.**

EVAPORATOR MOTORS

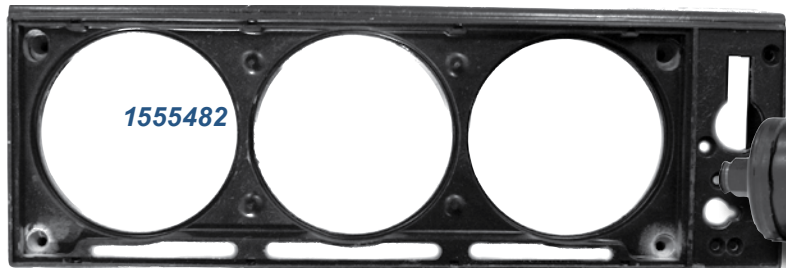
- 1553061** Motor, evaporator blower. 1961 Lark. Pictured. **\$85.00 ea.**
1559648 Evaporator blower motor. 1963-66 Lark & Hawk, 1963-85 Avanti. **\$85.00 ea.**
1565485 Blower fans & motor assembly. 1965-66 all. **\$137.50 ea.**

EVAPORATOR FANS

- 1549296** Fan, evaporator blower motor. 1959-61 Lark. Pictured. **\$32.50 ea.**
1555767 Fan, left evaporator blower. 1962-64 Lark & Hawk. 1963-85 Avanti. **\$46.50 ea.**
1555768 Fan, right evaporator blower. 1962-64 Lark & Hawk. 1963-85 Avanti. **\$46.50 ea.**

EVAPORATOR BRACKETS & HOUSINGS

- 1548276P** Blower housing front half, 1959-60 Lark. **\$18.00 ea.**
1555482 Panel, evaporator face. 1959-60 Lark, 1961 Hawk. Pictured below. **\$96.50 ea.**
1555484 Grille, evaporator face panel. 1959-60 Lark, 1961 Hawk. **\$28.50 ea.**
1555486 deflector, evaporator air. 1959-60 Lark. **\$20.00 ea.**
1552487 Upper housing, evaporator blower, 1961 Lark. **\$36.00 ea.**
1555982 Bracket, evaporator to dash, 1962 convertible. **\$16.50 ea.**
1562953 Bracket, evaporator to dash. 1964 Hawk. **\$7.00 ea.**
1562955 Bracket, evaporator side support. 1964 Hawk without heater. **\$9.50 ea.**
1565384 Housing, right evaporator blower. 1965-66 all. **\$24.00 ea.**
1565385 Housing, left evaporator blower. 1965-66 all. **\$24.00 ea.**



HOSES

- 1545962** Hose, condenser to evaporator liquid. 1959-61 Lark V-8. **\$86.50 ea.**
1545966 Hose, condenser to evaporator. 1961-63 Lark & Hawk V-8. **\$76.50 ea.**
1548356 Hose, compressor to condenser. 1962-64 Hawk. **\$26.00 ea.**
1561404 Hose, evaporator to compressor suction, 1964 Hawk. **\$63.00 ea.**
1565429 Hose, compressor to drier tank. 1965-66 6-cylinder. **\$75.00 ea.**
1565430 Hose, compressor to condenser. 1965-66 all. **\$63.00 ea.**
1565431 Hose, compressor to evaporator. 1965-66 6-cylinder. **\$107.50 ea.**
1565432 Hose, compressor to evaporator. 1965-66 V-8. **\$85.00 ea.**

HOSE GROMMETS

- 1548829** Hose grommet, to dash and air deflector. 1959-64 Lark & Hawk. **\$5.00 ea.**
1548830 Hose grommet to air deflector. 1959-60 Lark. **\$3.95 ea.**

- 1548831** Hose grommet to dash. 1959-64 Lark & Hawk. **\$3.95 ea.**

AIR CONDITIONER CONDENSER

- NEW Listing - 1541732** 1956 Golden Hawk. Should fit other Hawks also. **\$225.00 ea.**



AIR CONDITIONER BEZEL

- 1558074** Air conditioner bezel. Plastic/chrome for 1963-65 Lark & 1963-64 Hawk. Takes 4. 1963-64 Avanti. Takes 2. **\$8.00 ea.**

DRIER TANK

- 1550747** Drier tank. 1961-63 Lark. **\$107.50 ea.**

COMPRESSOR & RELATED PARTS

- 1546048** Compressor clutch & pulley. 1960-61 Hawk. **\$375.00 ea.**
1546054 Valve, compressor suction. 1965-66 all. **\$37.50 ea.**

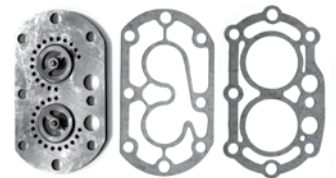
- 1549298** Brush, holder & cable assembly., compressor clutch. 1959-60 Lark. **\$24.50 ea.**

- 1550770** Seal kit, compressor drive shaft. 1959-60 Lark. **\$75.00 ea.**

- 1551422** Bracket, side compressor mounting, 1961-64 6-cylinder. **\$48.00 ea.**
1565393 Bracket, compressor mount. 1965 6-cylinder. **\$85.00 ea.**
1565906 Bracket, compressor mount. 1966 6-cylinder. **\$107.50 ea.**

VALVE PLATE KITS

- 1544975** Valve plate kit, compressor. 1960-61 Hawk. **\$86.50 ea.**
1551380 Valve plate kit, compressor. 1960-62 Lark & Hawk. **\$83.50 ea.**



New!



This time, if you BUY a catalog - You get five dollars off your first purchase.

Offer applies only to first order and after the purchase of a catalog.

